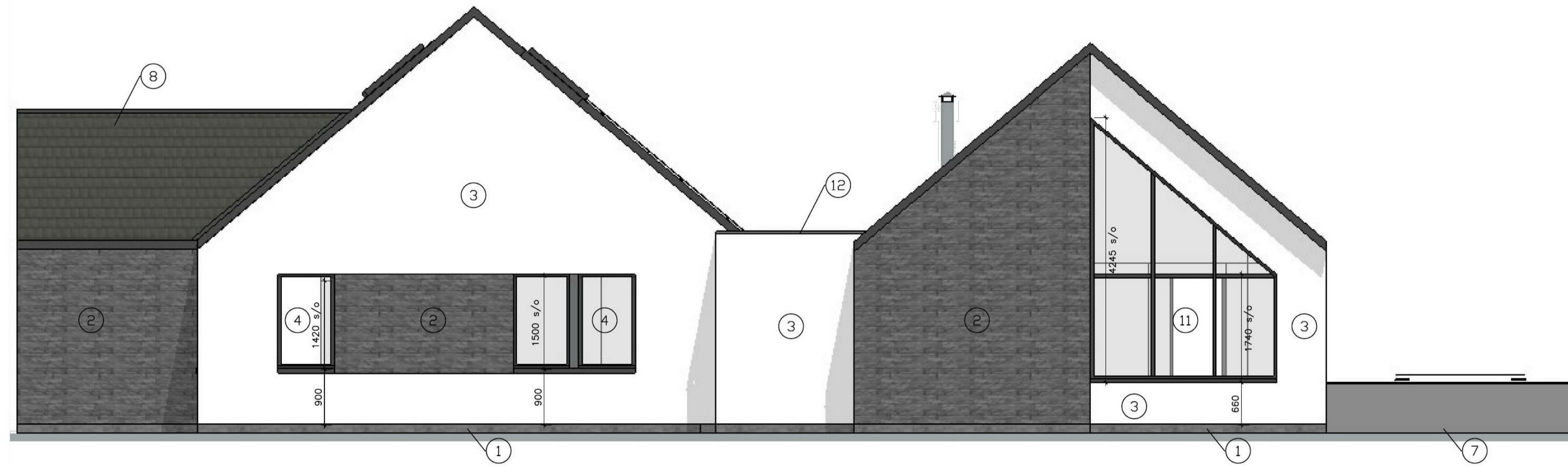


Proposed Rear Elevation 1:50
 0 1 5m

MATERIALITY:

1. Grey facing brick to basecourse.
2. Pilestone Black Rock stock cladding (or equiv.) - Colour black.
3. Smooth proprietary render system - Colour white.
4. uPVC double glazed windows and doors to achieve U-Value 1.2w/m²k. Colour - Anthracite Grey/ RAL 7016.
5. Double glazed spandrel panel to achieve U-Value 1.2w/m²k. Colour - Anthracite Grey/ RAL 7016.
6. 950x1180mm electrically operated Velux Windows to achieve U-Value 1.2w/m²k.
7. Slatted patio.
8. Marley Modern Concrete roof tiles - Colour grey.
9. PV panels.
10. "Schüco" aluminium double glazed Bi-Fold Doors. External face finished to dark grey RAL Colour 7016. Internal face with white finish. Doors to achieve 1.4w/m²k U-value.
11. Aluminium double glazed windows and doors to achieve U-Value 1.2w/m²k. Colour - Anthracite Grey/ RAL 7016.
12. Proprietary single ply roofing membrane.

All new window cills to be precast concrete eternit colour grey.
 All new soffits, fascias & rainwater goods to be Anthracite Grey/ RAL 7016 Eurocel uPVC.



Proposed Side Elevation 1:50
 0 1 5m

Scottish Borders Council
 Town And Country
 Planning (Scotland) Act
 1997

REFUSED

subject to the
 requirements of the
 associated Decision
 Notice

21/00045/FUL
 17/03/2021